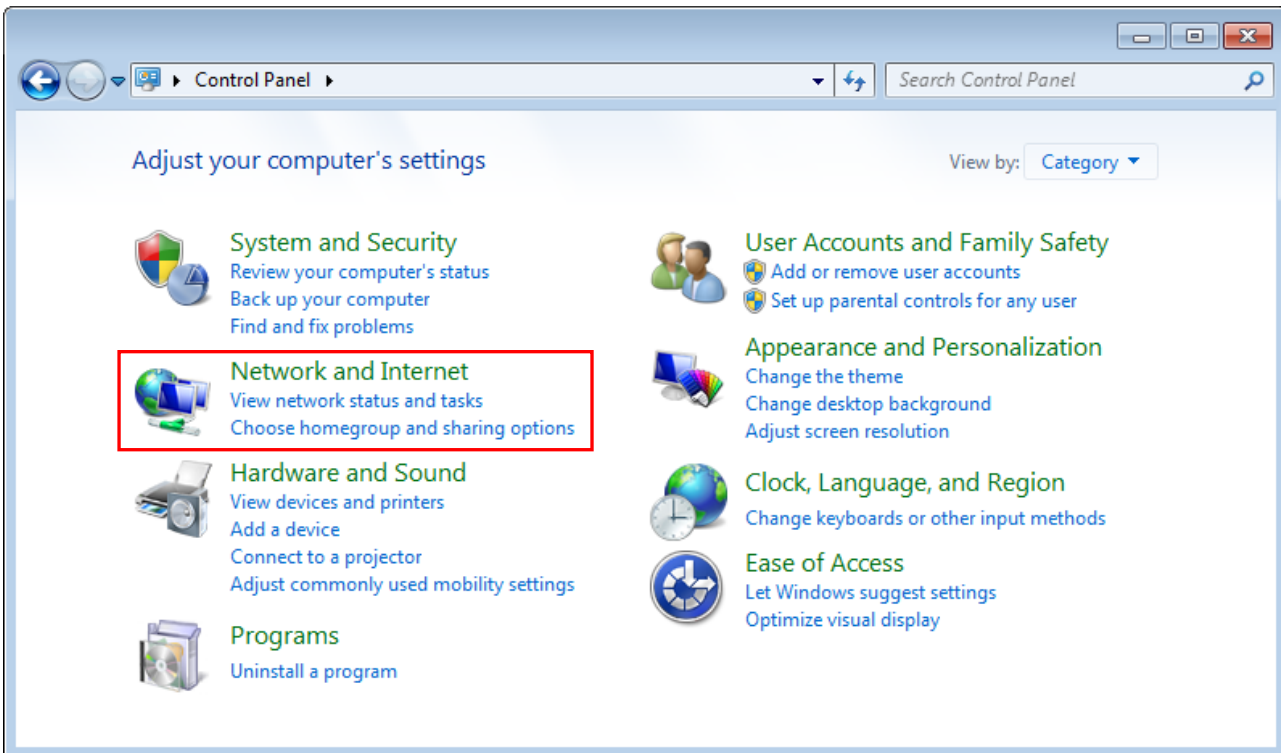
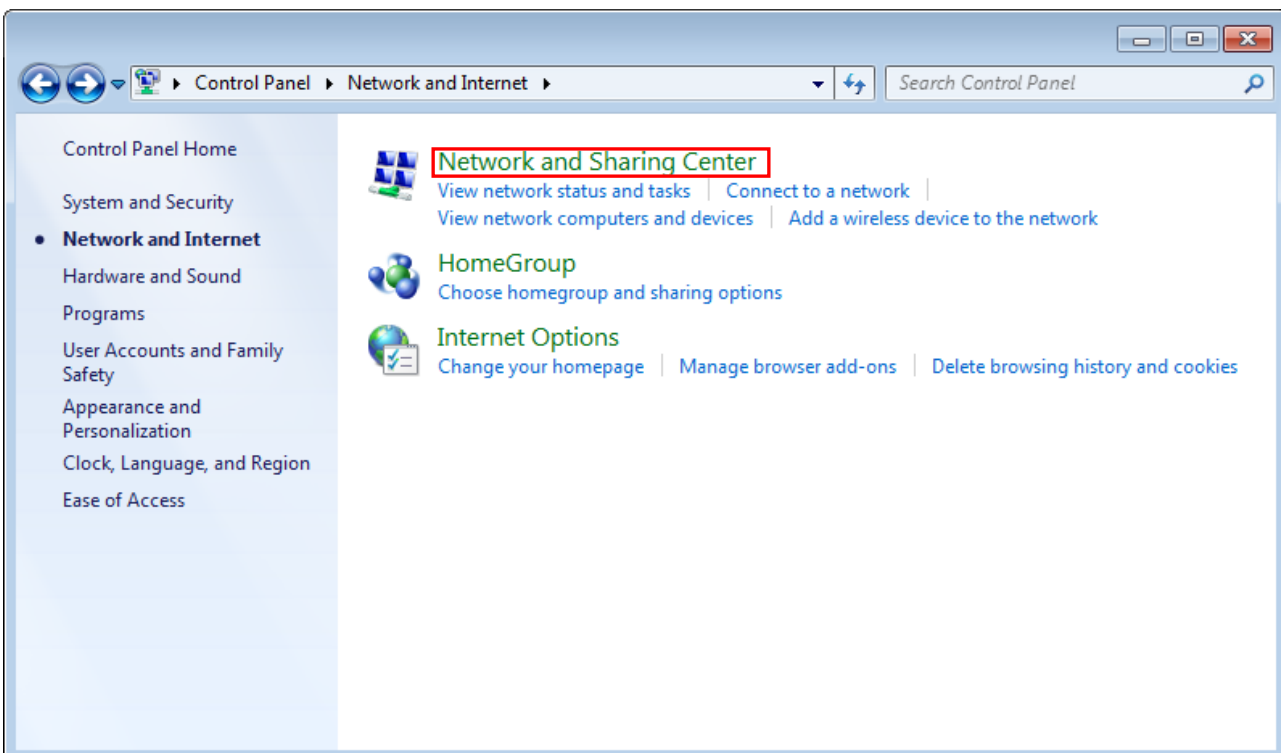


Wireless LAN Connection with IEEE802.1x Authentication for Windows 7

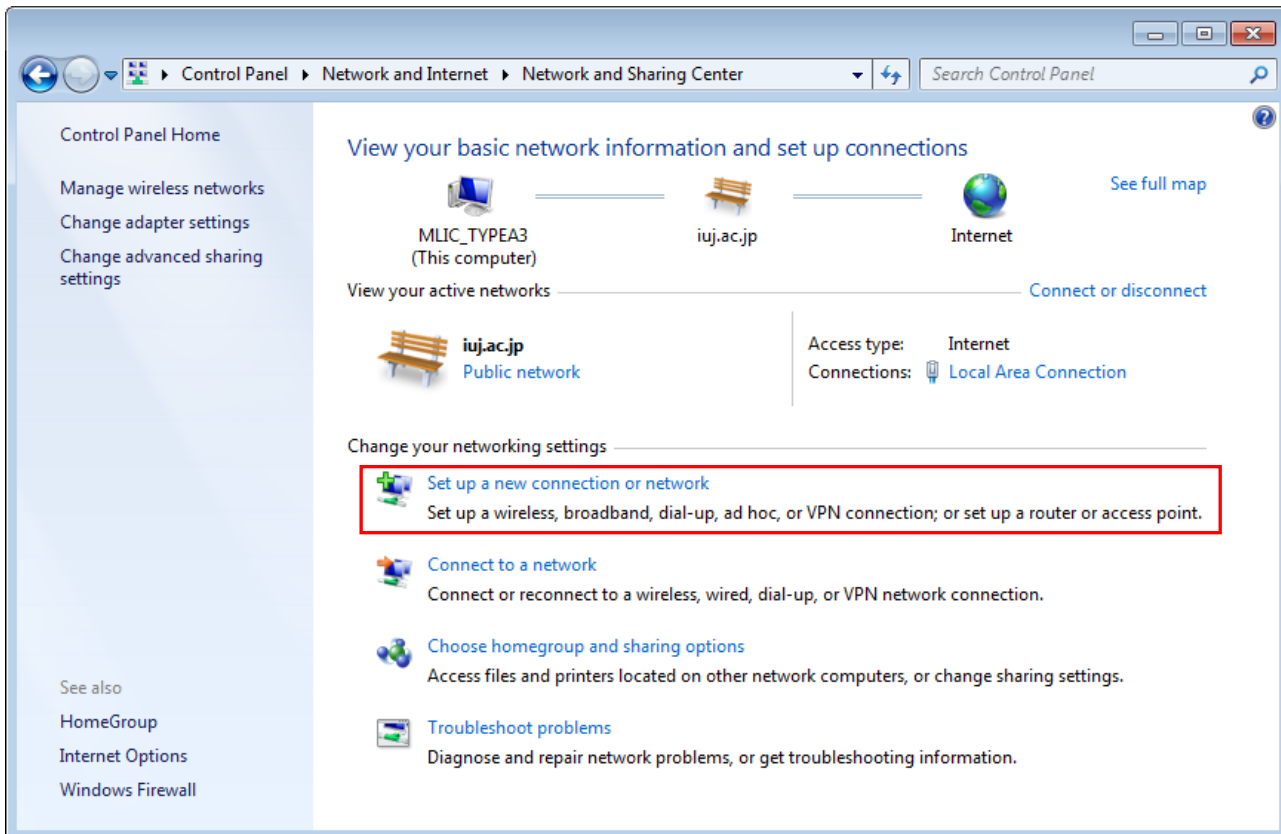
1. Go to **Control Panel** and double-click **Network and Internet**.



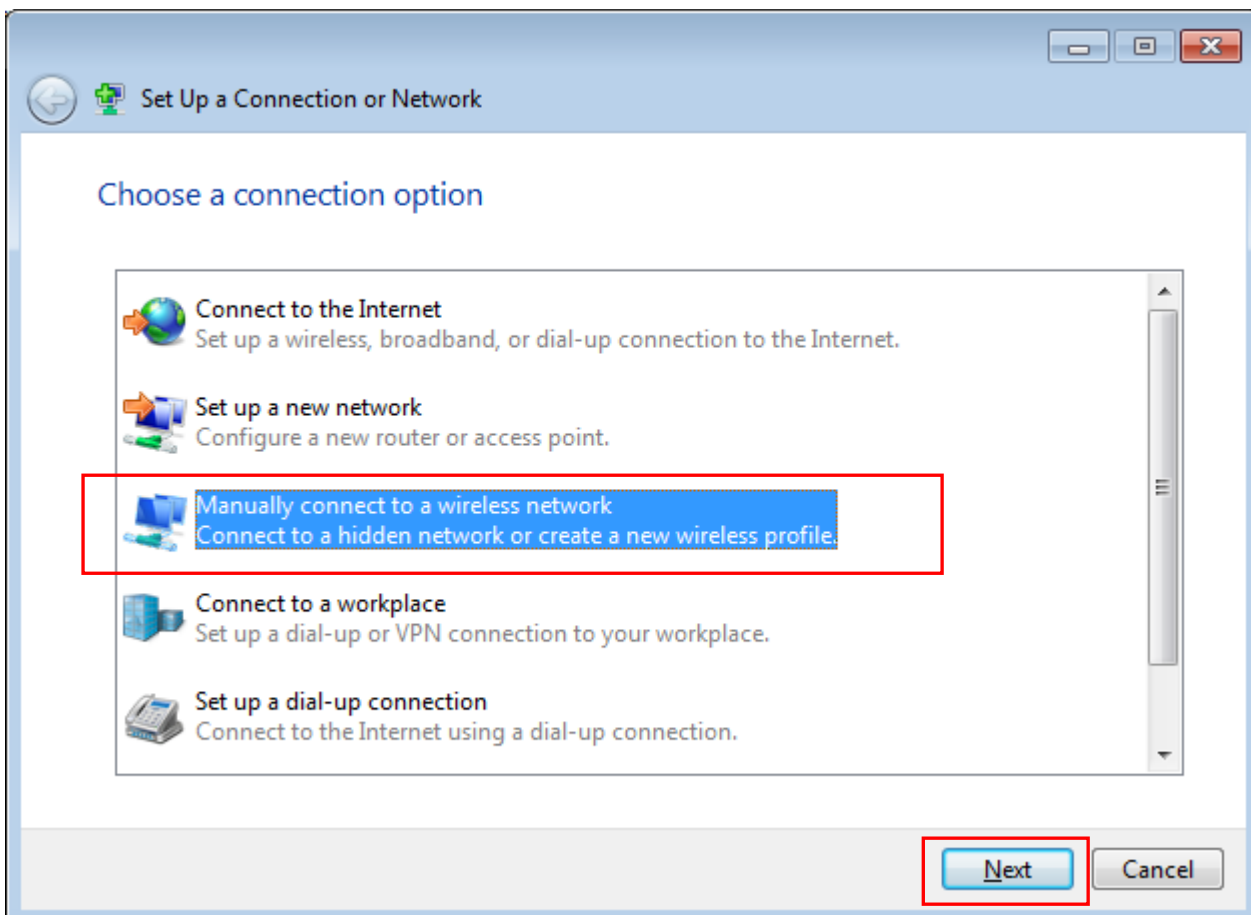
2. Click **Network and Sharing Center**.



3. Click **Setup a new connection or network**.

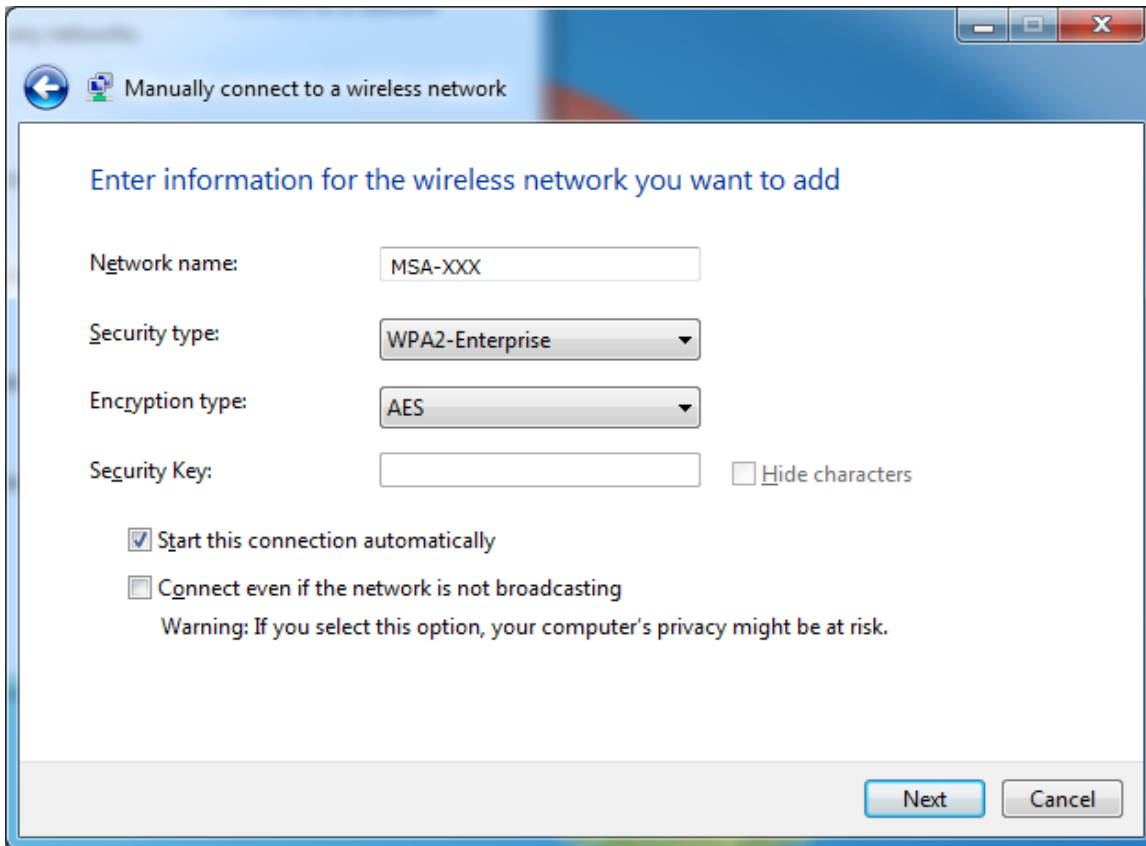


4. Select **Manually connect to a wireless network** and click **Next**.



For MSA only

5. Enter **MSA-XXX (XXX is your room No.)** in the **Network name** box, and select **WPA-Enterprise** or **WPA2-Enterprise** for **Security type**, Select **AES** for **Encryption type**. And then click **Next**. *You can choose **TKIP** in place of AES.



Manually connect to a wireless network

Enter information for the wireless network you want to add

Network name:

Security type:

Encryption type:

Security Key: Hide characters

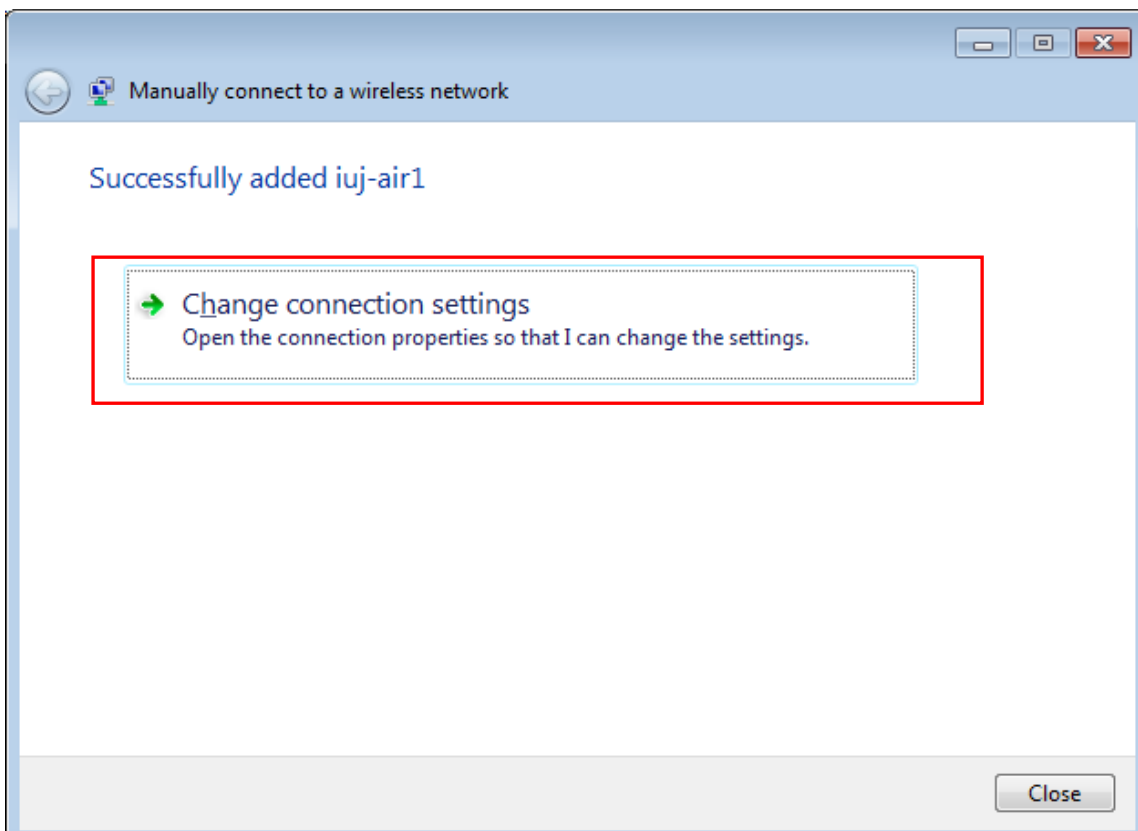
Start this connection automatically

Connect even if the network is not broadcasting

Warning: If you select this option, your computer's privacy might be at risk.

Next Cancel

6. Click **Change connection settings**.



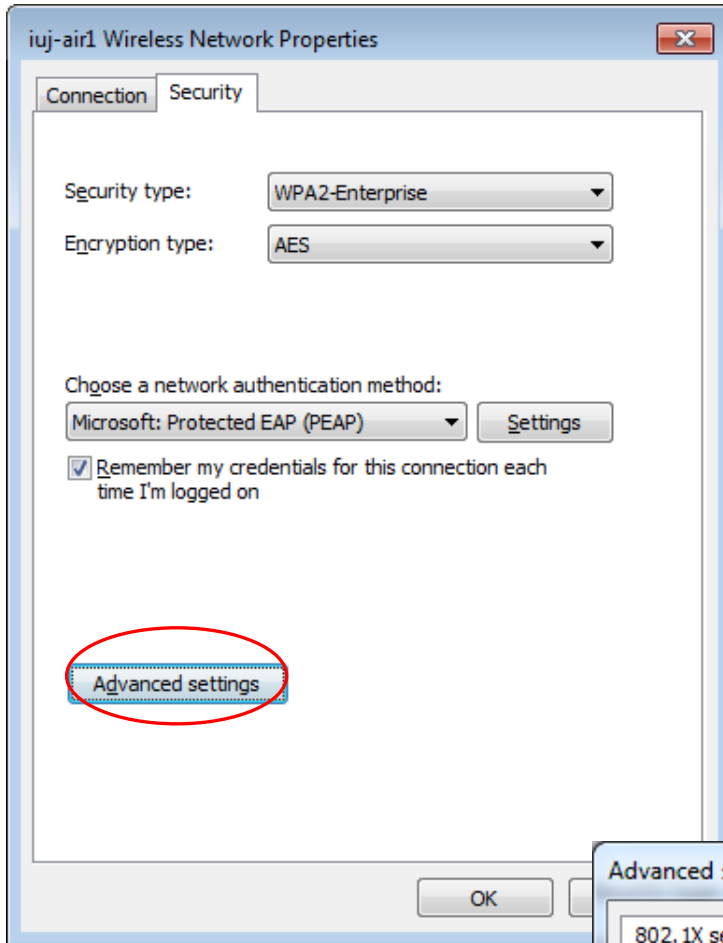
Manually connect to a wireless network

Successfully added iuj-air1

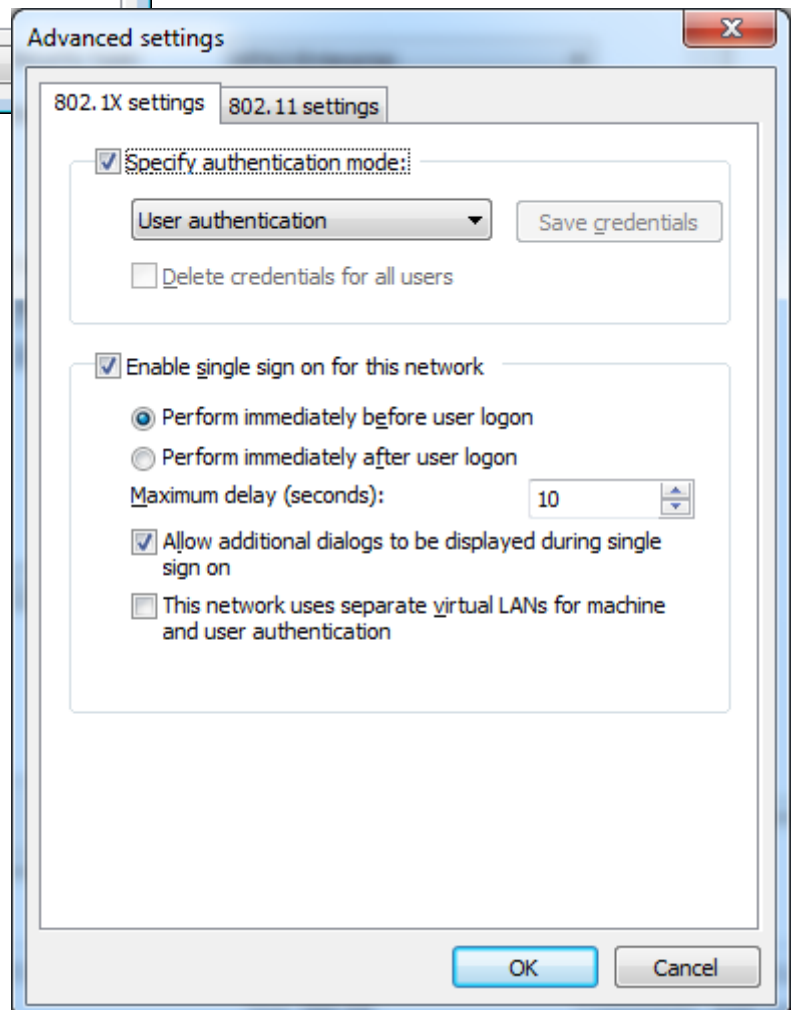
[Change connection settings](#)
Open the connection properties so that I can change the settings.

Close

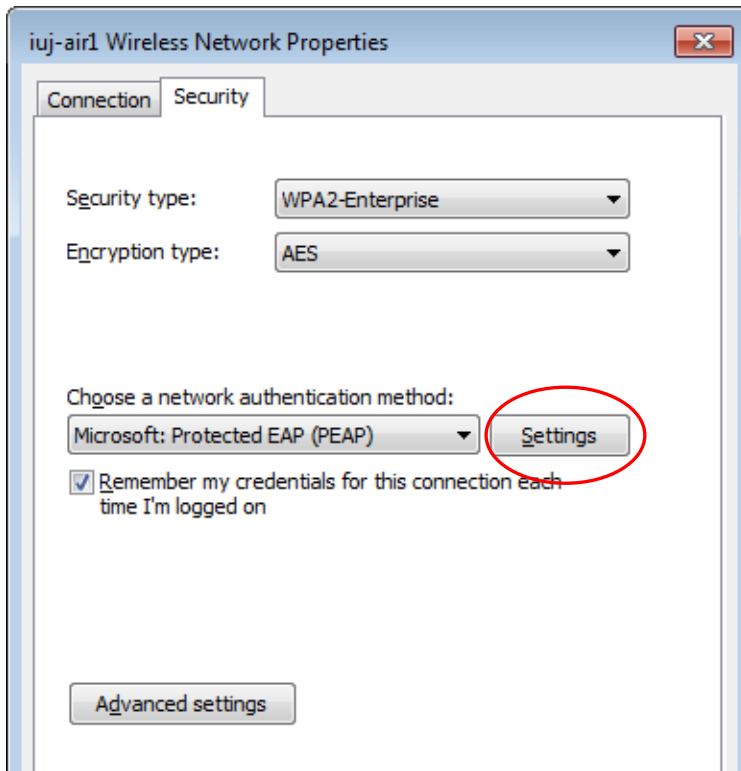
7. Select the **Security** tab, click **advanced settings**.



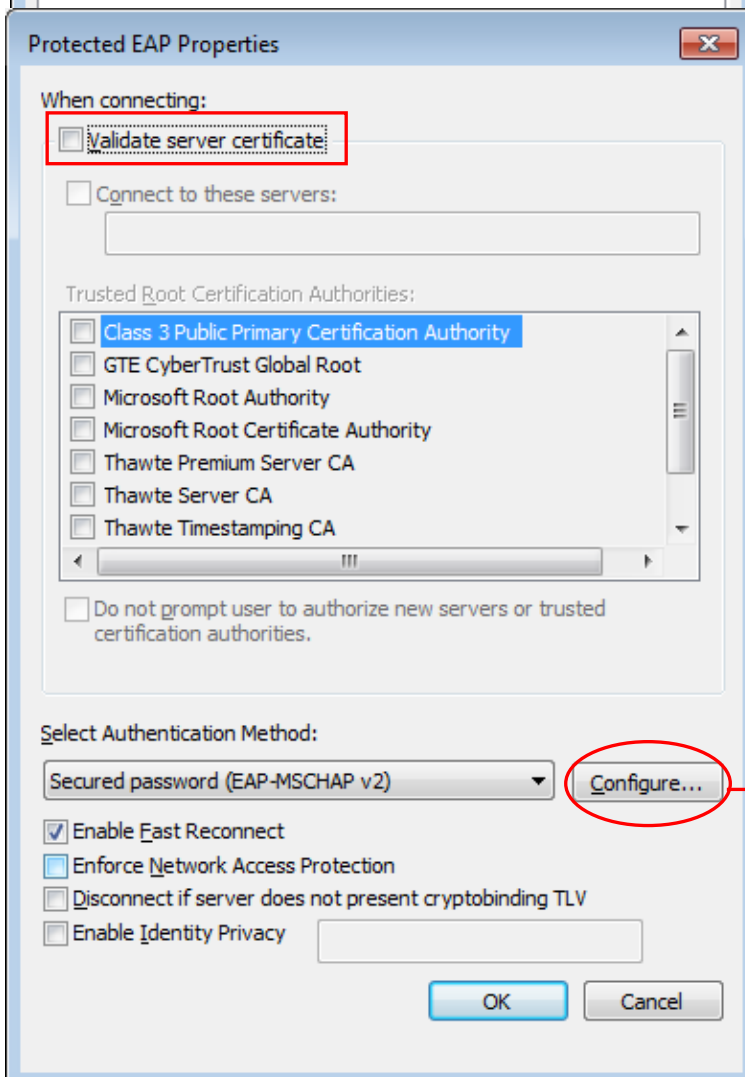
8. On the **802.1X settings** tab, check on **Specify authentication mode** and select **User authentication** from the pull-down menu. And then also check on **Enable single sign on for this network** and click **OK**.



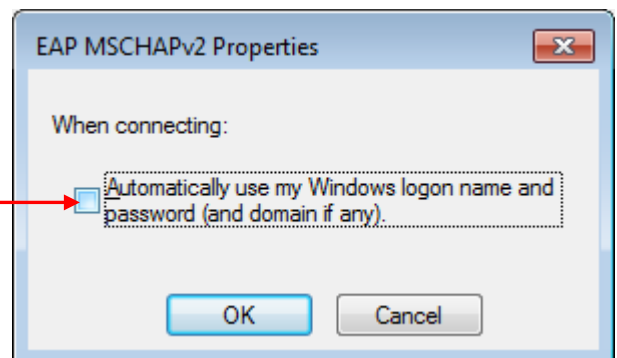
9. Go back to this window, click **Settings**.



10. Uncheck **Validate server certificate** and click **Configure**.



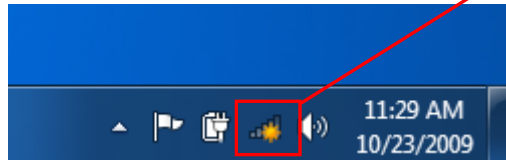
11. Uncheck **Automatically use my Windows logon name and password (and domain if any)** and then click OK.



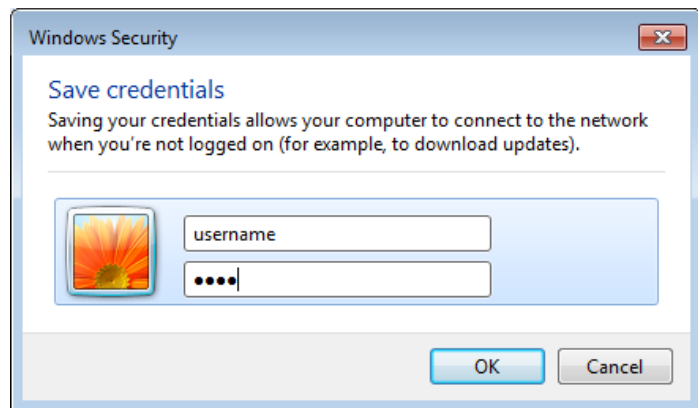
12. Click on the wireless LAN small icon on the taskbar.

When the window on the right appears, click **Connect**.

*If the system is connecting to the network and seems to be stopped, click **Disconnect** and then click **Connect**.



13. When the window below appears on the desktop, enter your own user name and password for IUJ and click OK.



14. Going back to the **Network and Sharing Center** window, you can confirm if the connection is established or not. See the status **Access Type** is **Internet**, and **Connections** is **Wireless Network Connection (MSA-XXX)**.

